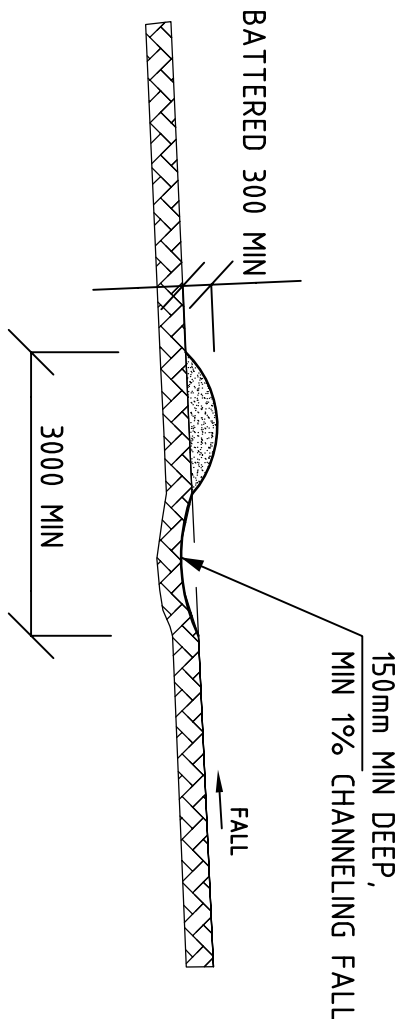


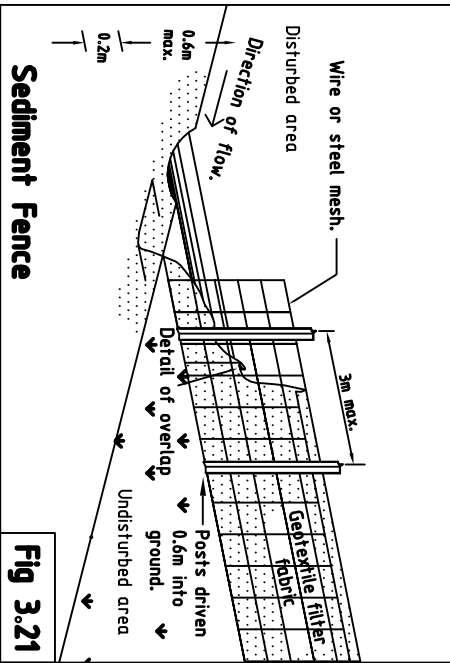
## NOTES

- ALL EROSION AND SEDIMENT CONTROL MEASURES TO BE INSPECTED AND MAINTAINED DAILY BY SITE MANAGER
- MINIMIZE DISTURBED AREAS
- ALL STOCKPILES TO BE CLEAR FROM DRAINS, GUTTERS AND FOOTPATHS
- DRAINAGE IS TO BE CONNECTED TO STORM WATER SYSTEM AS SOON AS POSSIBLE
- ROADS AND FOOTPATHS TO BE SWEEP DAILY AND WHEN ITS NEEDED



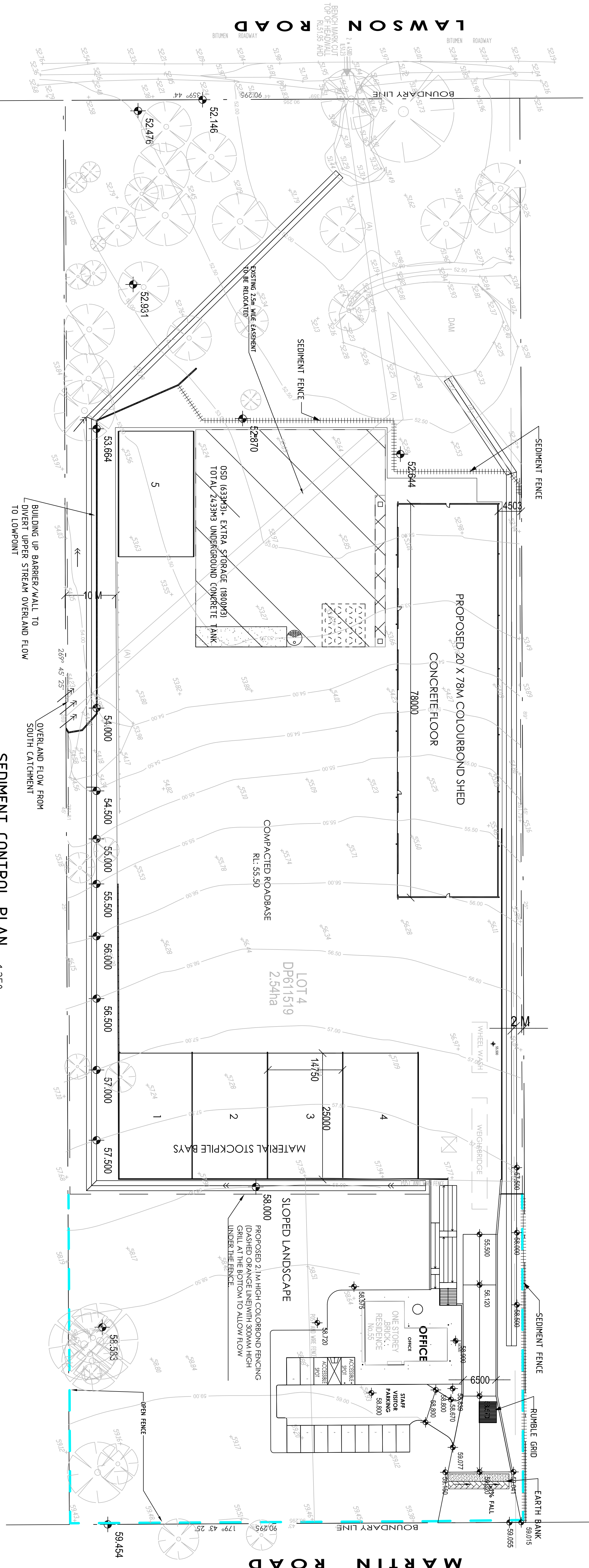
## EARTH BANK DETAIL N T S

MORE DETAILS REFER TO COUNCIL'S  
Erosion & Sediment Control Policy,  
EARTH BANK, SD 5-5



## SEDIMENT FENCE DETAIL N T S

MORE DETAILS REFER TO COUNCIL'S  
Erosion & Sediment Control Policy,  
SEDIMENT FENCE, SD 6-8



## SEDIMENT CONTROL PLAN 1:250

Erosion and sediment plan and detail

AMENDMENTS  
A 16/07/19 Issue for DA

L Y

ARCHITECT

PROJECT  
Proposed stormwater plan  
for A M J  
at 55 Martin Rd, Badgery Creek

**T.O.P. Consulting Group (NSW) Pty. Ltd**  
A.B.N. 76 156 071 706  
Structural and civil Engineers  
Shop 15, 13-19 Hoggan St., Kogarah, NSW 2217  
Ph: (02)9588-9960 Fax: (02)9588-9977  
Email: office@topconsulting.com.au

SCALE  
AS SHOWN  
1:1000

DATE  
17/01/18

ISSUE  
A

DRAWN  
L Y

CHECKED

APPR'D

SHEET  
D1

JOB NUMBER  
17-040